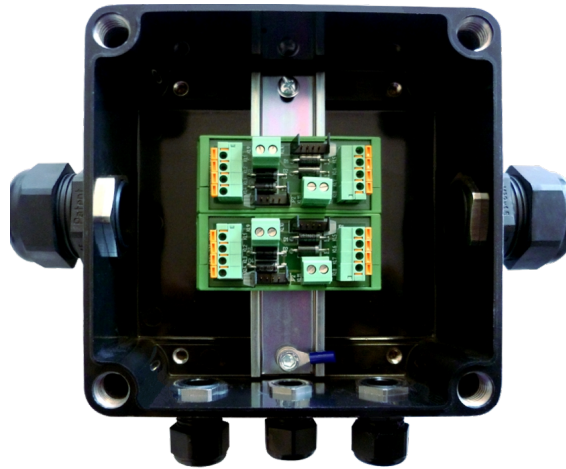


# Connection Box CBO 20-\* -Ex



## Features

- ◆ ATEX marking for use in zones 2 and 22
- ◆ 5 connection variants for sensor cable **SEC 20** and external sensors **ESA**
- ◆ Hookup of up to two connection cables **CC 20**
- ◆ Mounting screw channels outside of sealed enclosure interior
- ◆ Tongue and groove cover seal with silicone O-Ring
- ◆ Metric polyamide Ex cable-glands with NBR O-Ring and TPE seal

## Specifications

- ◆ Type of protection zone 2: Ex II 3G Ex nA IIC T4 Gc
- ◆ Type of protection zone 22: Ex II 3D Ex tc IIIB T125 °C Dc
- ◆ Operating temperature: -20 °C...+60 °C
- ◆ Ingress protection: IP 65
- ◆ Dimensions: 236,7 x 191 x 101 mm (w x h x d, maximum including cable-glands)
- ◆ Case material: Glass-fibre reinforced polyester, black
- ◆ Surface resistance: <math>< 10^9 \Omega</math>
- ◆ Weight: 1,38 ... 1,5 kg (depending on configuration)

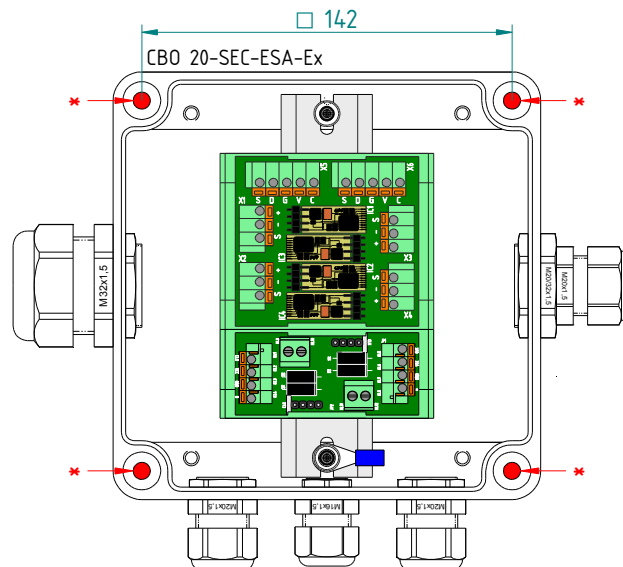
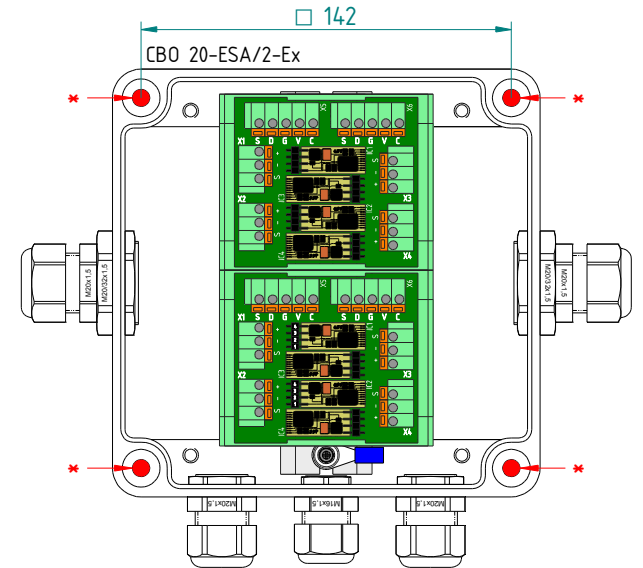
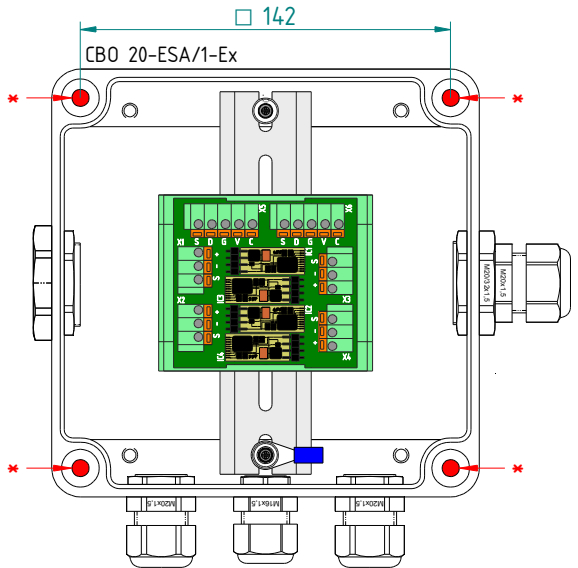
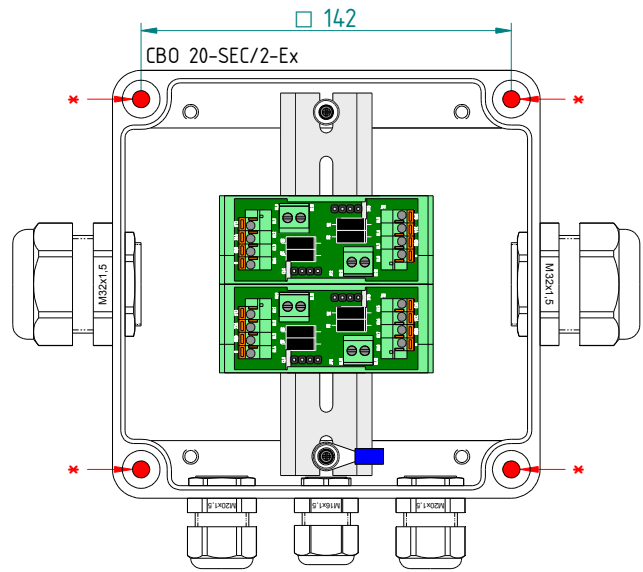
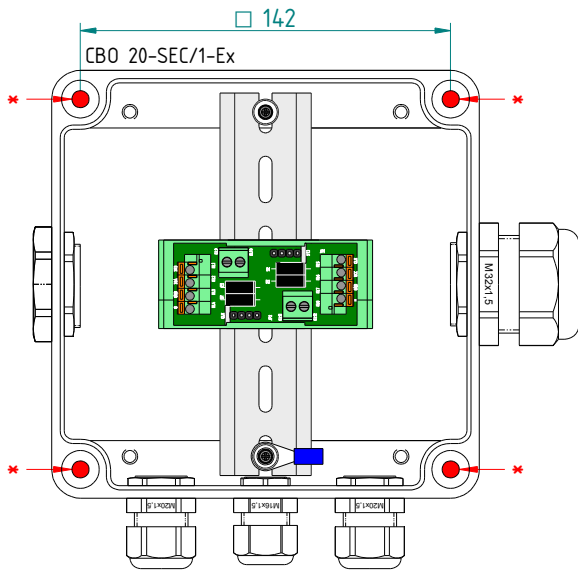
## Ordering Information

- |   |                         |
|---|-------------------------|
| ◆ <b>Connection Box CBO 20-SEC/1-Ex</b><br>(to link one <b>SEC 20</b> sensor cable with up to two <b>CC 20</b> connection cables, can also be used as end box)              | Art.-no.: <b>G00293</b> |
| ◆ <b>Connection Box CBO 20-SEC/2-Ex</b><br>(to link two <b>SEC 20</b> sensor cables with up to two <b>CC 20</b> connection cables)  | Art.-no.: <b>G00296</b> |
| ◆ <b>Connection Box CBO 20-ESA/1-Ex</b><br>(to link up to four external sensors <b>ESA</b> with up to two <b>CC 20</b> connection cables)                                   | Art.-no.: <b>G00294</b> |
| ◆ <b>Connection Box CBO 20-ESA/2-Ex</b><br>(to link up to eight external sensors <b>ESA</b> with up to two <b>CC 20</b> connection cables)                                  | Art.-no.: <b>G00297</b> |
| ◆ <b>Connection Box CBO 20-SEC-ESA-Ex</b><br>(to link one <b>SEC 20</b> sensor cable, up to four external sensors <b>ESA</b> with up to two <b>CC 20</b> connection cables) | Art.-no.: <b>G00295</b> |

## Scope of Delivery

- ◆ **Connection Box CBO 20-SEC/1-Ex**, including one connection module **CCM 3000\_D**, screw plugs in housing bores, cable-glands in plastic bag
- ◆ **Connection Box CBO 20-SEC/2-Ex**, including two connection modules **CCM 3000\_D**, screw plugs in housing bores, cable-glands in plastic bag
- ◆ **Connection Box CBO 20-ESA/1-Ex**, including one connection module **MOD 4**, screw plugs in housing bores, cable-glands in plastic bag
- ◆ **Connection Box CBO 20-ESA/2-Ex**, including two connection module **MOD 4**, screw plugs in housing bores, cable-glands in plastic bag
- ◆ **Connection Box CBO 20-SEC-ESA-Ex**, including one connection module **CCM 3000\_D** and one connection module **MOD 4**, screw plugs in housing bores, cable-glands in plastic bag

CBO 20-\*Ex Models

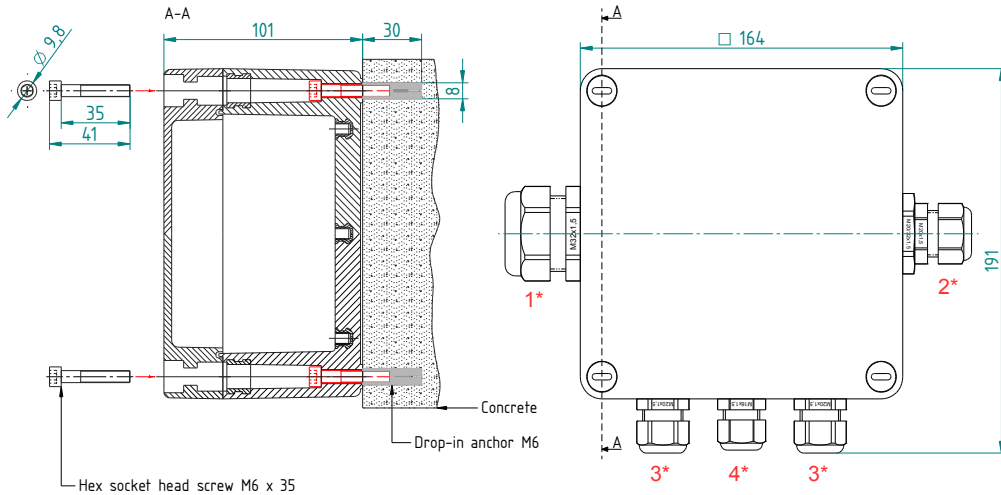
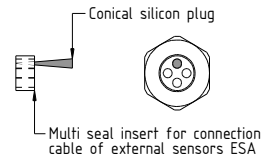
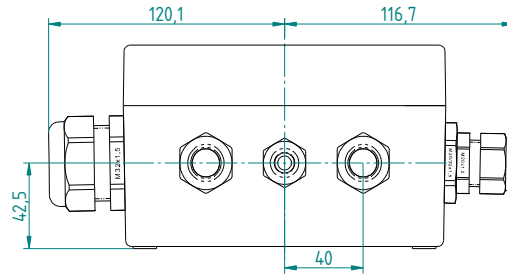


**Dimensions**

Drawing of connection variant **CBO 20-SEC-ESA-Ex**

Case material: Glas fibre reinforced polyester  
Ingress protection: IP 65  
Colour box: Deep black (similar to RAL 9006)

Fastening material:  
Hex socket head screw, M6 x 35, DIN912, stainless steel  
Drop-in anchor E M6, stainless steel



**Attention!**  
When mounting the connection box, use only the mounting holes \* as provided!  
Do not drill any hole into the connection box!  
Close unused openings with plugs!  
Use the accompanying seals when inserting glands and plugs!  
Provide sufficient space for connection cable bending radius (30 cm for SEC 20)!

- 1\* Cable-gland for sensor cable **SEC 20**
- 2\* Cable-gland for external sensors **ESA**
- 3\* Cable-gland for connection cable **CC 20**
- 4\* Cable-gland for potential equalisation connection

LISTEC GmbH  
Am Sandberg 34  
D - 84424 Isen  
Germany

Tel.: +49 (0) 8083 5385-0  
Fax.: +49 (0) 8083 5385-20  
e-mail: info@listec-gmbh.de  
www.listec-gmbh.de

A company of the Swiss Securitas Group

Subject to change without prior notice!