

SEC 20 Simulator CSM 200



Features

- ◆ Designed to simulate sensor cable **SEC 20** in test set-ups
- ◆ Simulation of up to 200 sensors
- ◆ Two temperature sensors available on-board for manual heat-up or cool-down tests
- ◆ Additional facilities to connect up to two sensor cables **SEC 20** and an external temperature sensor **ESA**
- ◆ Four push buttons, configurable with alternative temperature values, to simulate maximum temperature, differential temperature and differential temperature pre-alarms, as well as sensor loss.
- ◆ Test set-ups with redundant LIST systems can be realised by using two or more **CSM 200**
- ◆ 35 mm DIN-rail mount

Specifications

- ◆ Operating temperature: 0 °C ... +40 °C
- ◆ Dimensions: 102,5 x 82,0 x 42,0 mm (w x h x d, for 35 mm DIN-rail mount)
- ◆ Weight: 0,13 kg
- ◆ Number of sensors: Up to 200 (contiguous address range)
- ◆ Sensor address range: 0 ... 999
- ◆ Power supply: During operation by LISTcontroller via connection cable **VK SEC**, during set-up by PC via **USB-cable**

Ordering Information

- ◆ **SEC 20 Simulator CSM 200**

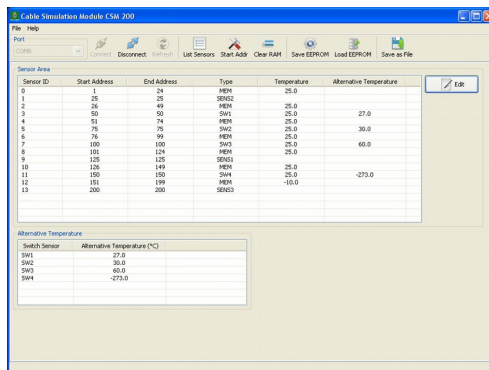
Art.-no.: **G00264**

Scope of Delivery

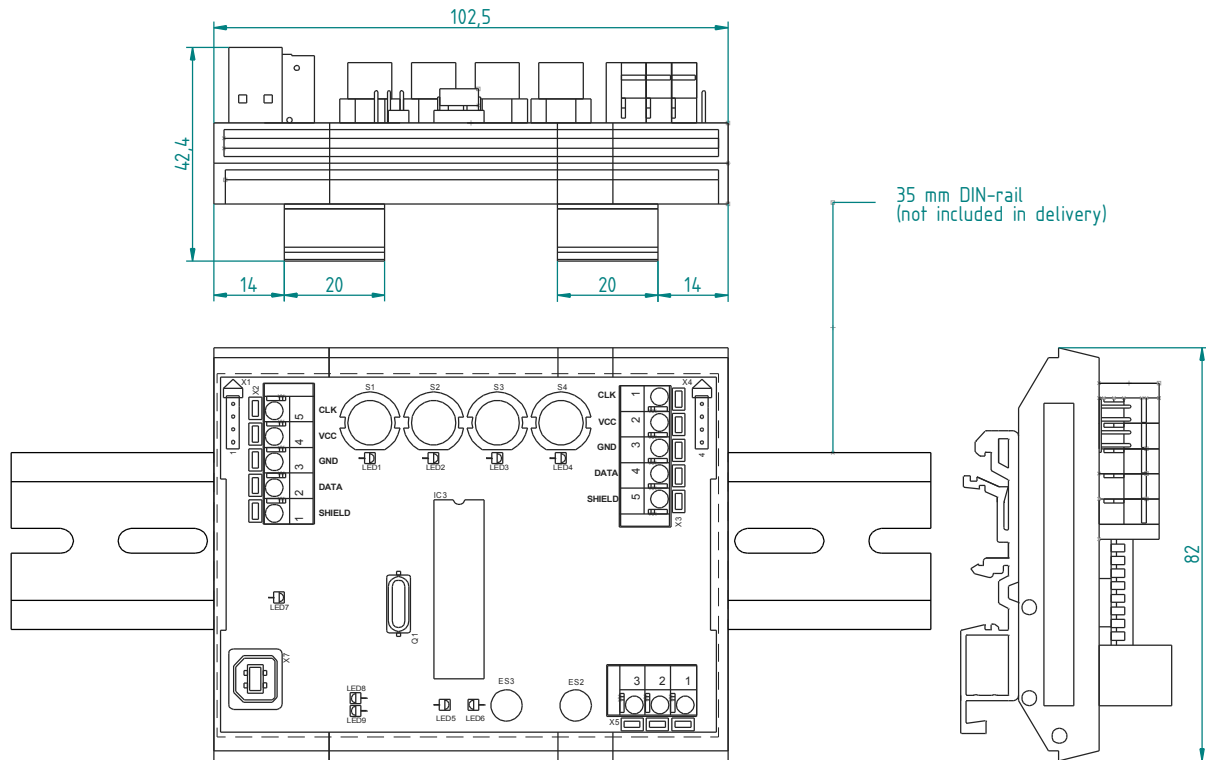
- ◆ **CSM 200** (pre-programmed with LISTEC default set-up)
- ◆ **USB-cable**, type A-B
- ◆ LISTmemory **USB** flash drive, including **CSM 200** driver, software and documentation

Application Software

- ◆ System prerequisites: PC with Windows XP ServicePack 3 and JavaRuntimeEnvironment from Version 6.35 onwards



Dimensions



LISTEC GmbH
Am Sandberg 34
D - 84424 Isen
Germany

Tel.: +49 (0) 8083 5385-0
Fax.: +49 (0) 8083 5385-20
e-mail: info@listec-gmbh.de
www.listec-gmbh.de

A company of the Swiss Securitas Group

Subject to change without prior notice!