

LIST cable tester LCT 20



Features

- ◆ Designed to test sensor cable **SEC 20** before, during, and after on-site installation
- ◆ Ideal tool for trouble-shooting sensor cable **SEC 20** issues
- ◆ Mains-independent operation by using an integral rechargeable battery-pack
- ◆ Highly portable due to compact form factor, low weight and a shoulder-strap
- ◆ Automatic data-logging to PC

LCT 20 Indicators

- ◆ Operation: **LED PWR** green
- ◆ Measuring cycle: **LED SEC** blue
- ◆ Charging: **LED CRG** orange
- ◆ Battery-pack fault: **LED ERR** red

Connections

- ◆ **SEC:** Via connection cable **VK SEC** and connection module **CCM 3000** to sensor cable **SEC 20**
- ◆ **USB:** Connection to PC
- ◆ **15 V DC:** AC Power adapter

General Data

- ◆ Operating temperature: -10 °C ... +60 °C
- ◆ Dimensions: 206,0 x 168,0 x 36,0 mm (w x h x d, without shoulder-strap)
- ◆ Case material: Aluminium
- ◆ Weight: 1,1 kg (including shoulder-strap)
- ◆ Sensor address range: 0 ... 1023
- ◆ AC power adapter: Input: 100 – 240 V AC 50/60 Hz 0.5 A, Output: 15 V DC, 1200 mA
- ◆ Rechargeable battery-pack: Special NiMH battery-pack with an operating time span of about 18 hours

Ordering Information

- ◆ **LIST cable tester LCT 20** Art.-no.: **G00417**

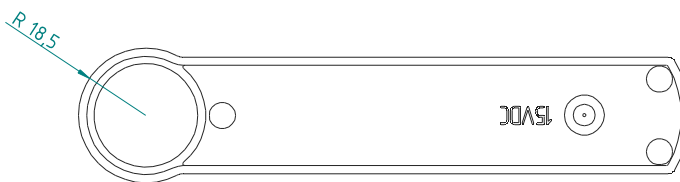
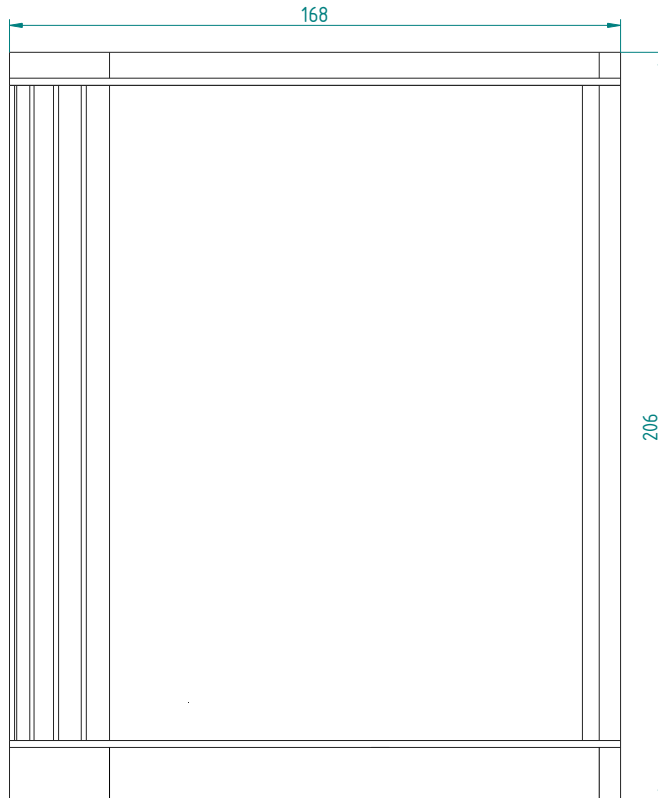
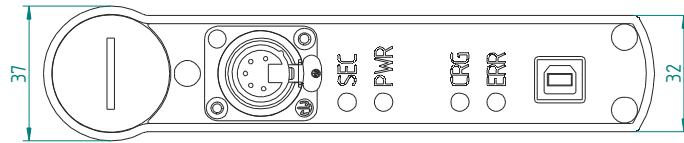
Scope of Delivery

- ◆ **LCT 20** including shoulder-strap and AC power adapter
- ◆ Connection cable **VK SEC**
- ◆ Connection module **CCM 3000**
- ◆ **USB** connection cable, type A-B
- ◆ LISTmemory **USB** flash drive, including **LCT 20** driver, software and documentation

Application Software

- ◆ System prerequisites: Windows XP ServicePack 3, DotNet 2.0, and onwards

Dimensions



LISTEC GmbH
Am Sandberg 34
D - 84424 Isen
Germany

Tel.: +49 (0) 8083 5385-0
Fax.: +49 (0) 8083 5385-20
e-mail: info@listec-gmbh.de
www.listec-gmbh.de

A company of the Swiss Securitas Group

Subject to change without prior notice!