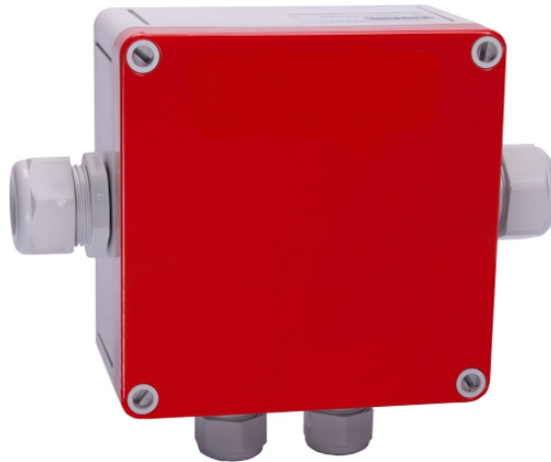


Connection Box CBO 5



General Data

◆ Case material:	Glass-fibre reinforced polycarbonate, free from halogen, silicone and heavy metal, UV- and weather-proof
◆ Ingress protection:	IP 66 according to EN 60529:2000
◆ Protection class:	II – protective insulation according to VDE 0106
◆ Impact resistance:	IK 08, according to DIN EN 50102 (VDE 0470-100)
◆ Case body:	Grey, similar to RAL 7035
◆ Case lid:	Red, similar to RAL 3020
◆ Gasket:	Polyurethane
◆ Mounting:	Mounting screws outside of sealed enclosure interior
◆ Operating temperature:	-35 °C ... +60 °C, up to +80 °C short term
◆ Cable glands:	Metric, with O-Ring
◆ Weight:	0,48 ... 0,55 kg (depending on configuration)
◆ Dimensions:	130,0 x 130,0 x 74,7 mm, without cable glands (w x h x d)

Combustion behaviour

- ◆ UL 94 V-2
- ◆ UL50 5VA / UL 746C
- ◆ EN 60695-11-10 / IEC 60695-11-10, 960 °C
- ◆ VDE 0471 part 11-10, 960 °C
- ◆ CSA C 22.2

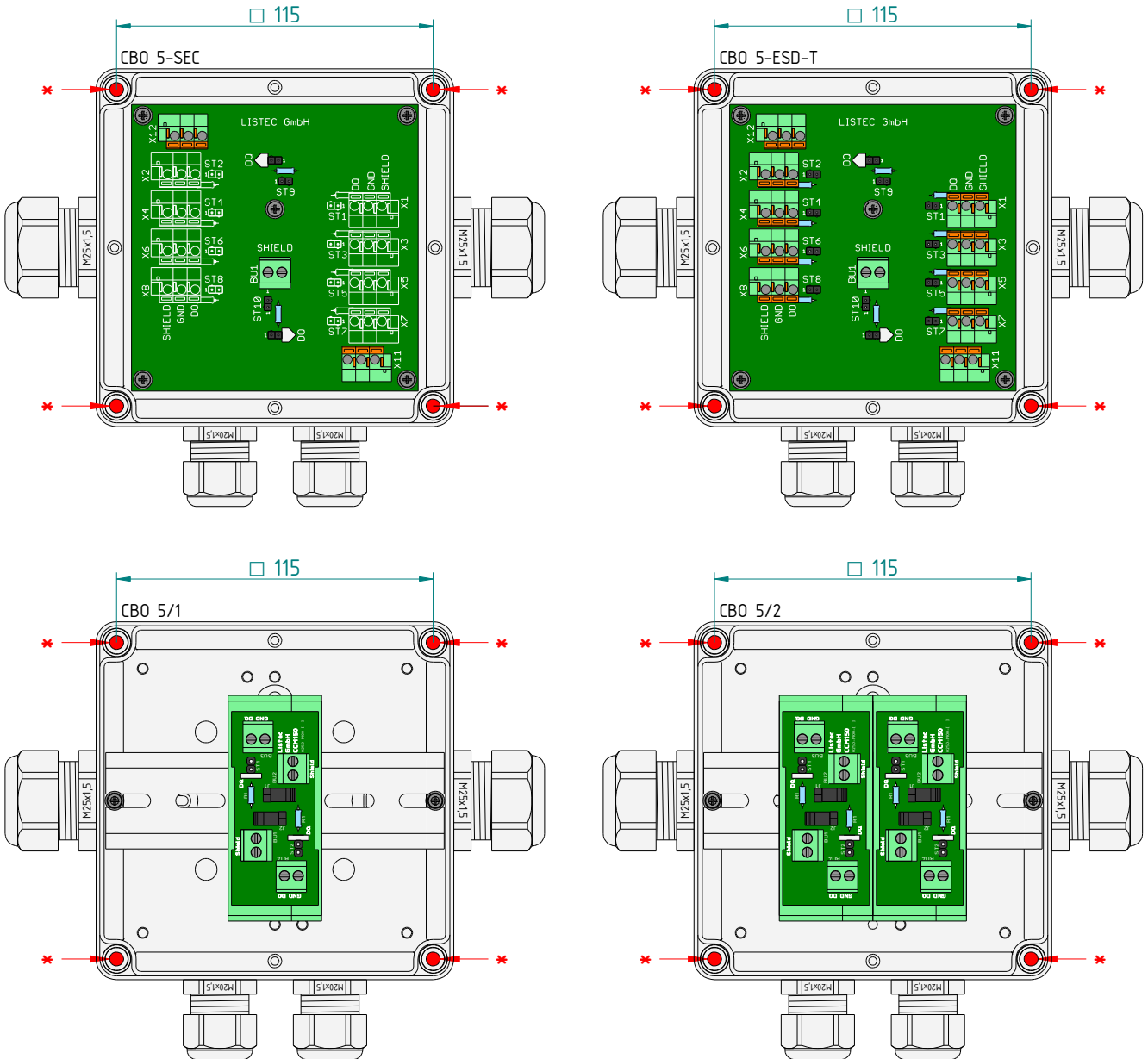
Ordering Information

◆ Connection Box CBO 5-SEC Connection of up to two sensor cables SEC 15 and up to two connection cables CC 15 to SCU 800 port A or B	Art.-no.: G00300
◆ Connection Box CBO 5-ESD-T Type 1: Connection of up to two sensor cables SEC 15 and up to two connection cables CC 15 to SCU 800 port A or B Type 2: Connection of one sensor cable SEC 15 , up to four external sensors ESD , and up to two connection cables CC 15 to SCU 800 port A or B Type 3: Connection of up to eight external sensors ESD and up to two connection cables CC 15 to SCU 800 port A or B	Art.-no.: G00530
◆ Connection Box CBO 5/1 Connection of up to two sensor cables SEC 15 and up to two connection cables CC 15 to SCU 800 port A or B	Art.-no.: G00542
◆ Connection Box CBO 5/2 Connection of two sensor cables SEC 15 and one connection cable CC 15 each to SCU 800 port A and B	Art.-no.: G00543

Scope of Delivery

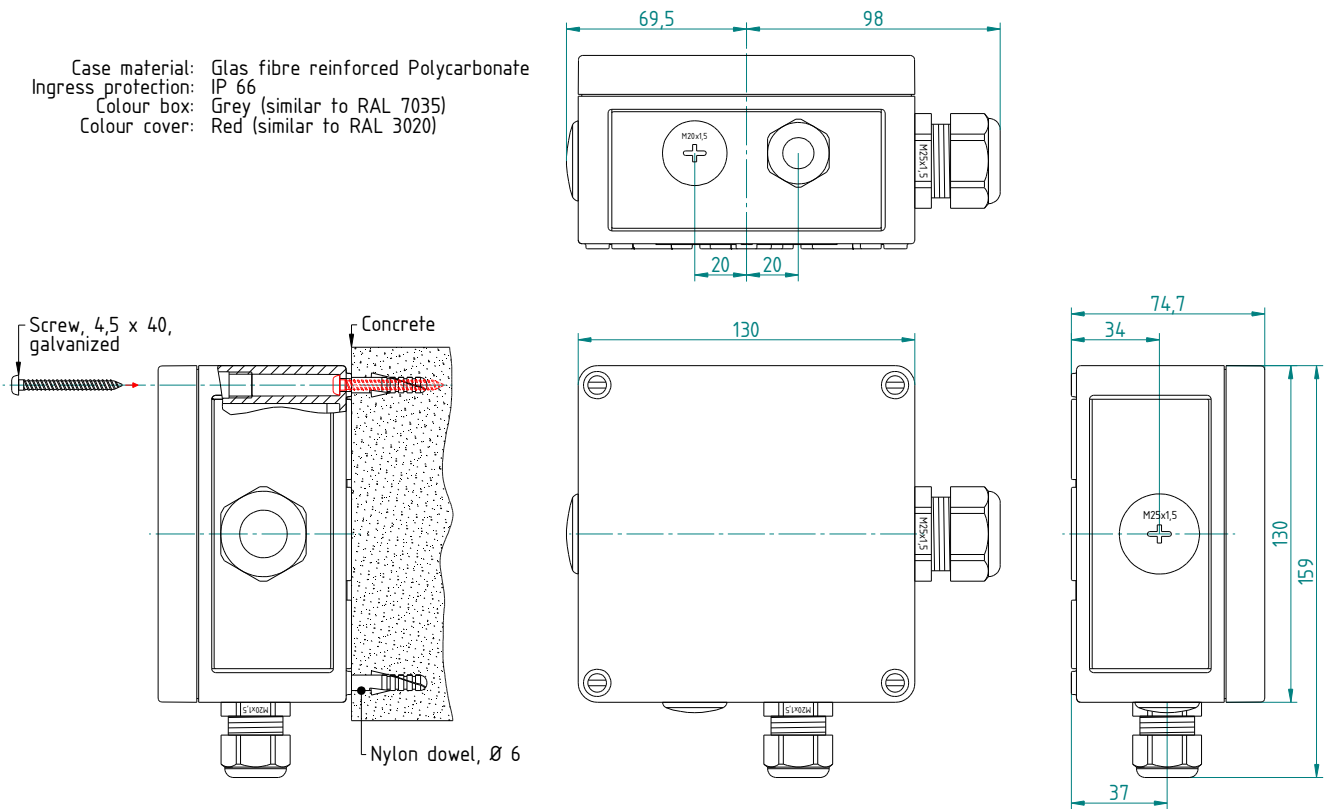
- ◆ **Connection Box CBO 5-SEC**, including universal connection module **UCM-SEC**, mounting materials, metric cable glands and connection materials
- ◆ **Connection Box CBO 5-ESD-T**, including universal connection module **UCM-ESD**, mounting materials, metric cable glands and connection materials
- ◆ **Connection Box CBO 5/1**, including one connection module **CCM 150-A**, mounting materials, metric cable glands and connection materials
- ◆ **Connection Box CBO 5/2**, including two connection modules **CCM 150-A**, mounting materials, metric cable glands and connection materials

CBO 5 Models



Dimensions

Case material: Glas fibre reinforced Polycarbonate
 Ingress protection: IP 66
 Colour box: Grey (similar to RAL 7035)
 Colour cover: Red (similar to RAL 3020)



Attention!
 When mounting the connection box, use only the mounting holes * as provided!
 Do not drill any hole into the connection box!
 Close unused openings with plugs!
 Use the accompanying seals when inserting glands and plugs!
 Provide sufficient space for connection cable bending radius (25 cm for SEC 15).

LISTEC GmbH
 Am Sandberg 34
 D - 84424 Isen
 Germany

Tel.: +49 (0) 8083 5385-0
 Fax.: +49 (0) 8083 5385-20
 e-mail: info@listec-gmbh.de
www.listec-gmbh.de

A company of the Swiss Securitas Group

Subject to change without prior notice!